

GITANYOW STEWARDSHIP GUARDIANS: DEVELOPING A FRAMEWORK FOR ENVIRONMENTAL MONITORING AND COMPLIANCE IN THE GITANYOW LAX'YIP

Tara Marsden/Naxginkw, MA

Wilp Gamlakyeltxw



Gitanyow's Foundation for Stewardship Guardians



Lisee'iw (Margaret Good) and her mother Gamlakyeltxw (Miriam Douse), 1910.

- **Dax'gyet:** The strength and legitimate authority of the Simgigyet'm over the Lax'yip.
- **Gwelx ye'enst:** the exercise of Gitanyow's right and responsibility to hold, protect, and pass on the Lax'yip in a sustainable manner from generation to generation.
- **Ayookxw:** Gitanyow law, specifically governing ownership of the Lax'yip.

Sources: GLLUP/RRA (2012) Definitions, Gitanyow Constitution (2009)

Purpose of Gitanyow Stewardship Guardians

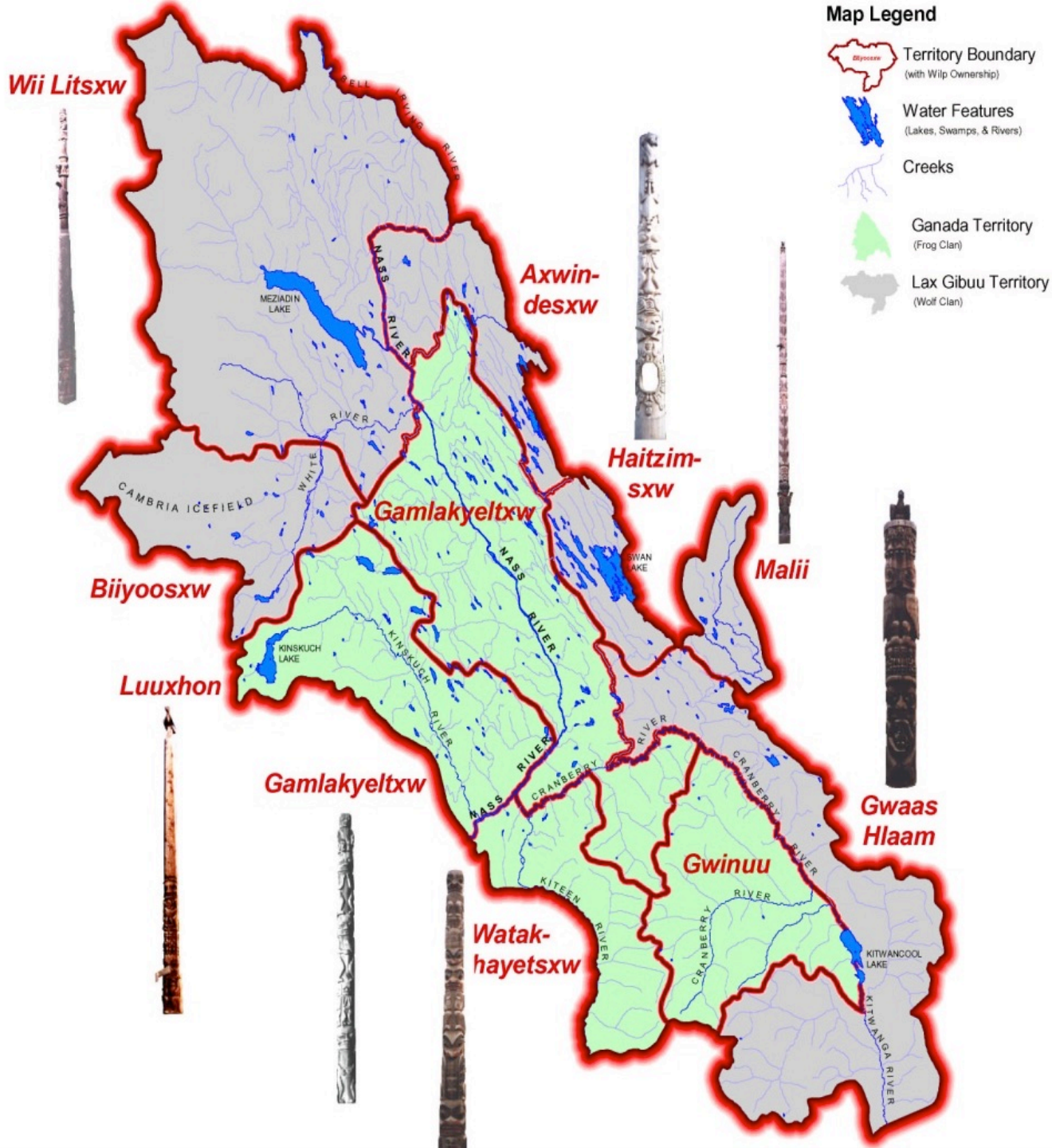


- Build a framework for stewardship monitoring, reporting, and compliance in accordance with Gitanyow Ayookxw and Gitanyow Recognition & Reconciliation Agreement and Land Use Plan.
- Coordinate and participate in immediate monitoring (high risk values).
- Provide training and develop customized curriculum for Gitanyow Stewardship Guardians.

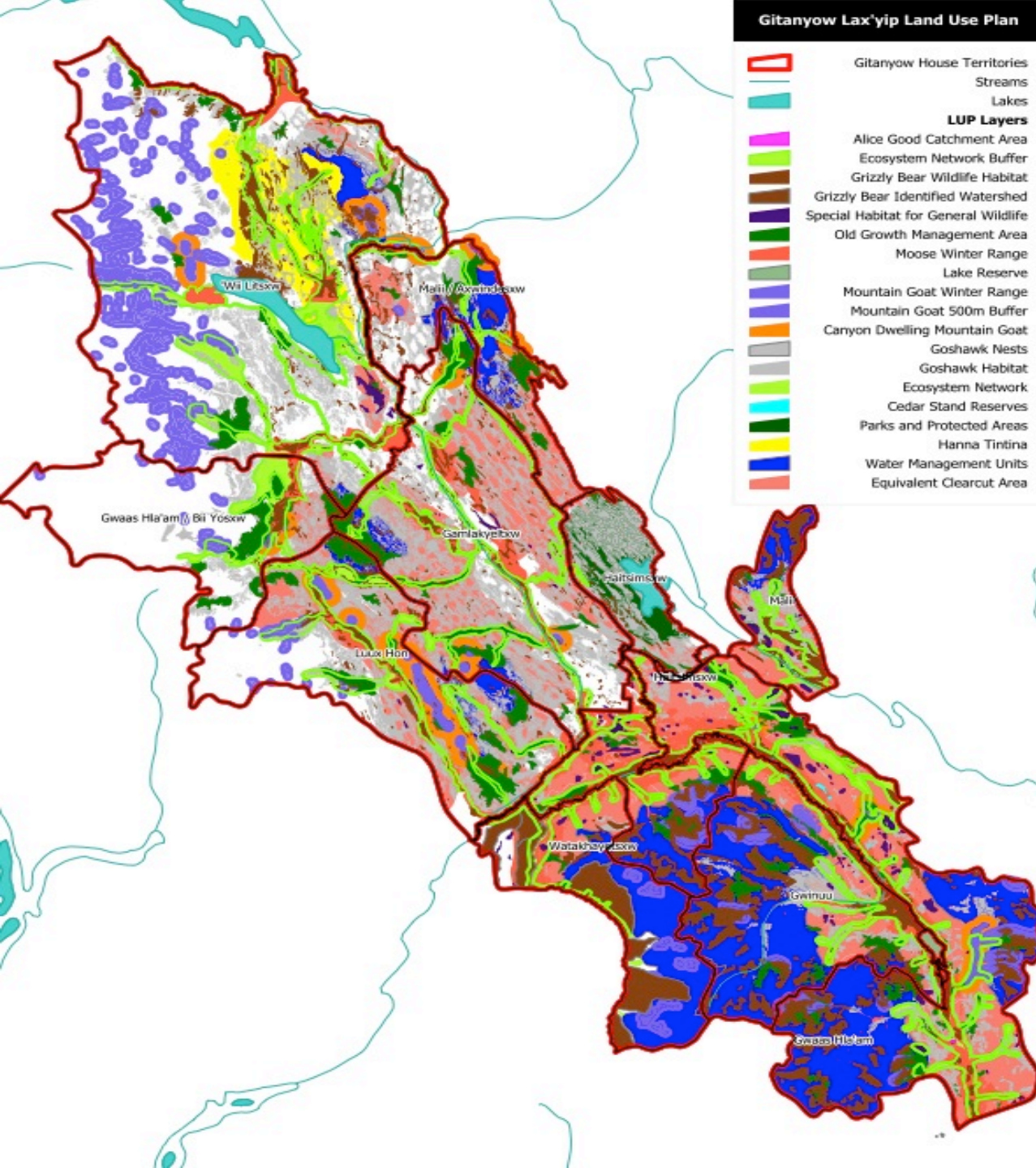
Purpose cont'd...

- To employ Gitanyow Wilp members as the “eyes and ears” on the Lax’yip and be accountable to the Gitanyow Simgiyet’m.
- To work in collaboration with the Province of BC, federal agencies, and our neighbours the Gitksan and Wet’suwet’en.
- To incorporate multiple initiatives and partnerships into one framework for the entire Lax’yip.
- To provide field assistance to the Gitanyow Lax’yip Land Use Plan Monitor.
- To build and implement monitoring and reporting protocols, in collaboration with SSAF.
- To learn from the Coastal Guardian Network and build relationships in support of common training, protocols, and funding opportunities.

Gitanyow Lax'yip



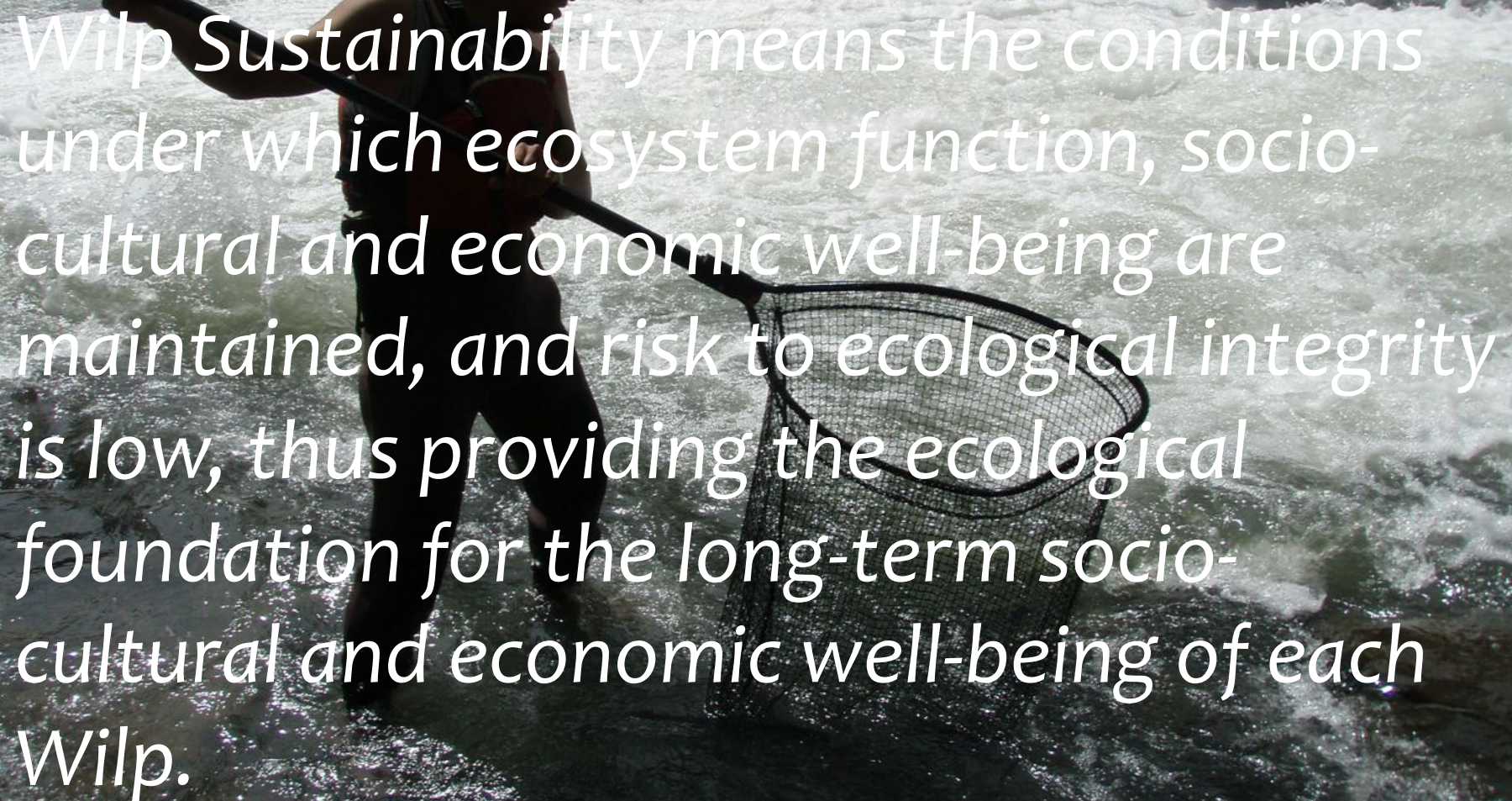
The Gitanyow Lax'yip Land Use Plan



The Gitanyow Lax'yip Land Use Plan has identified and mapped zonations of land that are required to maintain habitats, connectivity, and ecosystem function throughout the Lax'yip. The intent of the Plan is to manage cumulative effects of industrial development in order to maintain ecosystem function and Wilp Sustainability. In order to meet Gitanyow objectives and protect our Aboriginal rights and title, it is vital that these Plan zonations and habitats remain on the land in an undamaged and functional condition.

Wilp Sustainability

Wilp Sustainability means the conditions under which ecosystem function, socio-cultural and economic well-being are maintained, and risk to ecological integrity is low, thus providing the ecological foundation for the long-term socio-cultural and economic well-being of each Wilp.

A person wearing a cap and dark clothing is standing in a river, using a long-handled net to catch fish. The river has white water rapids and large logs floating in the background. The scene is outdoors with a natural, rugged setting.

Government-to-Government Foundation for Gitanyow Stewardship Guardians

- **RRA & GLLUP (2012 & 2015):** Shared Decision Making; Land Use Plan Monitor; Recognition and Reconciliation Clauses; Engagement Framework (Consensus-Based Decisions and Recommendations); BC EAO now subject to RRA & GLLUP
- Shared interests in Northwest Cumulative Effects pilot.
- Potential long-term agreement with the Oil and Gas Commission, including partnership in monitoring and enforcement.
- Various initiatives with BC Timber Sales, implementing FREP program.
- Partnership between BC Conservation Officer Service and Gitanyow for moose hunting permitting and monitoring program.
- Environmental Stewardship Initiative – SSAF.

Gitanyow Stewardship Guardians
Environmental Monitoring & Compliance Framework

Monitoring High Risk GLLUP Values

Identification of GLLUP Values at Highest Risk (i.e. Moose)

Where Data is Not Available to Determine Risk Ranking, Prioritize Data Collection (i.e. Grizzly population survey)

Identify Impacts/ Causal Factors for High Risk Values (i.e. roads on moose)

Monitoring Current Status and Future Plans for Impacts/Causal Factors (i.e. road assessment, de-activation plans, new road plans cumulative)

Monitoring Effectiveness of GLLUP

Field Support for Gitanyow Land Use Plan Monitor

Implementing Land Use Plan Monitor Framework to Assess Effectiveness of GLLUP Zones, Management Objectives

Monitoring Conservation Values in Hanna Tintina Conservancy, Meziadin Lake Park, and Swan Lake Park Jointly with MOE

Monitoring Project/Activity-Specific Compliance

BC EAO Certificate Conditions (where developed in consensus with BC EAO and Gitanyow)

BC OGC Permit Conditions (where GLLUP Consistency Main Factor in Consensus Recommendations)

FREP Resource Stewardship Monitoring

Monitoring Fish & Wildlife Harvest & Population Enumeration

Gitanyow Fisheries Authority - Catch Monitoring

Gitanyow Fisheries Authority - Enumeration Data (Kitwanga, Meziadin, Cranberry Rivers)

Gitanyow Moose Hunting Permitting & Monitoring Program

Output Options - Monitoring Results & Data

- Field Cards
- Annual Reports
- Incident Reports
- Mapping
- Photos, video, aerial and satellite photos

Database (population, point locations, GIS data)

Updated Ecological Risk Assessment Study - Wilp Sustainability

Wilp Sustainability Reports - by Wilp

Updated Training Modules for Stewardship Guardians based on Need

Stewardship Guardian Team

Guardians (Field Crew/Monitors)

Fisheries & Wildlife Biologists

GLLUP Monitor

GLLUP Implementation Coordinator

Gitanyow Hereditary Chiefs

ALL Gitanyow Wilp Members & General Public (Online Incident Reporting)

Phase 1 Framework Development - ISP

- Identification of High Risk GLLUP Values (link to SSAF). Preliminary High Risk Values include: Moose, Goshawk, Hanna Tintina watersheds habitat assessment and restoration.
- Identification of training needs and opportunities for Guardians to participate/assist in monitoring initiatives.
- Complete training for Guardians, if needed.
- Continue to develop/complete First Nations Liaison agreement with Oil & Gas Commission (if PRGT goes ahead).
- Participate in and receive results from Nass (& Kitwanga/Skeena) Salmon Habitat Assessment – Conservation Unit Habitat Report Cards, with the Pacific Salmon Foundation.
- Field visit with Coastal Guardian Network (Watchmen).

Draft Annual Operating Budget (Estimate) – Gitanyow Stewardship Guardians – Year 1

Item	Details	Cost
Guardians Vehicle (4WD)	Main transportation for 2-3 Guardians & gear)	\$50,000
Field Communication & Data Collection Devices	Satellite communication for safety (out of cell range), Ipads for Data Collection, Waterproof Camera	\$3,200
Guardian Uniforms	Jackets, Hats etc w/Logos	\$500
Additional Gear	As needed – i.e. snowshoes, ATV, purchase or rental	\$3,000
Training	Fish & Wildlife Monitoring, FREP, Gitanyow Ayookxw, other provincial	Target in-kind through partnerships
Staff Wages	2 Full-Time Guardians	\$90,000
Staff Wages	RpBio Supervisor; GLLUP Coordinator; Chiefs etc	\$15,000
Contract for Data Management	Sett-up and train staff on data management system	\$15,000
Fuel & Other Travel	For Guardian vehicle	\$10,000
Communications	Advertising (hunting etc), website, other communications	\$4,000
Total Estimate		\$190,700

Potential Sources of Revenue

- Fees charged to proponents (project or activity-based monitoring)
- Consultation capacity funding (EAO etc)
- Environmental foundations
- LNG ESI
- Gitanyow own source
- DFO (where linked to fisheries monitoring)
- Long-term agreement with BC OGC
- In-kind contributions for partnerships on specific projects (i.e. wildlife population surveys)
- The first year will have higher costs for start-up, decreasing thereafter in annual operation.

Transitioning Gitanyow Moose Hunting Monitors to Gitanyow Stewardship Guardians

- 2 Gitanyow Wilp members and 1 trainee, hunting monitors from September to January-Feb. each year.
- Trained in Environmental Monitoring for Construction Projects, Wildlife Monitoring, Fisheries Technician, and Archaeological assistants.
- Excellent field skills, knowledge of Lax'yip, Ayookxw and Wilp governance system.
- Supplement knowledge and skills with additional training opportunities: FREP protocols (partnership with Gitksan); moose population survey training, Goshawk habitat and nest field assessment.
- Transition to 2 full-time positions.



Ha'mya (Thank You!)

For more info:

www.gitanyowchiefs.com

Email: tara.marsden@gitanyowchiefs.com