

COLLABORATION IN PRACTICE:

Kitasoo/XaiXais Integrated Resources Authority and the Coastal First Nations Regional Monitoring System

VERNON BROWN AND LARA HOSHIZAKI

INDIGENOUS MAPPING WORKSHOP, NOVEMBER 2016



Outline

- ▶ Regional Monitoring System (RMS) Background
- ▶ RMS Components
- ▶ RMS Data Collection Application
- ▶ RMS Data Flow Model
- ▶ Kitasoo/Xai'xais (KX) Stewardship Programs
- ▶ KX Coastal Guardian Watchmen
 - ▶ Conversations with other government agencies
 - ▶ Enforcing research closures
 - ▶ Species-specific data collection



RMS Context and Beginning

- ▶ Guardian Watchmen and Stewardship Offices asked Network to develop RMS
- ▶ They wanted to:
 - ▶ Know more about what is happening in their territories
 - ▶ Be in control of their own data
 - ▶ Learn about what other Nations are doing
 - ▶ Work together to monitor issues and indicators they are all concerned about

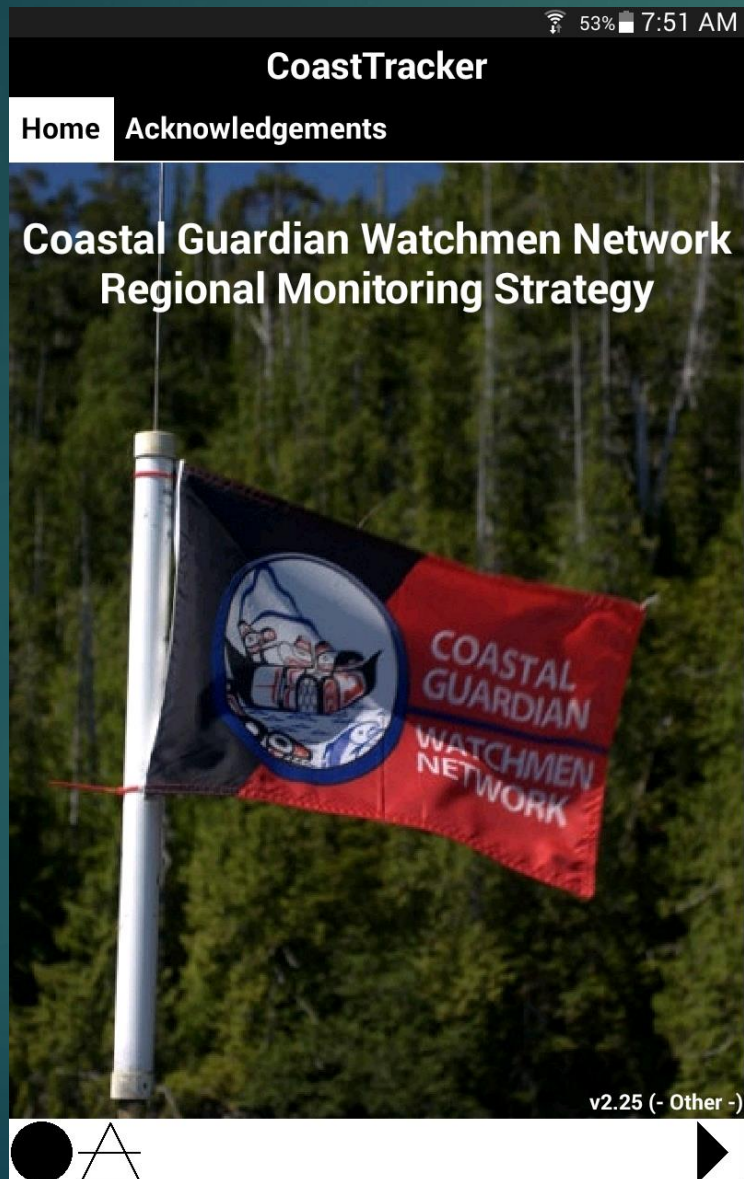


What is it? - RMS components

- ▶ Standard methods for collecting data
- ▶ Field cards and CoastTracker Tablet
- ▶ Online Data Management System (DMS)
 - ▶ Input online or upload from CoastTracker
 - ▶ View data online (maps, tables)
 - ▶ Export raw data (KML, Excel)
 - ▶ Data access and permissions control
- ▶ Data for planning and decision-making
- ▶ Support in data collection & use from RMS Coordinator



How ? - CoastTracker Tablets

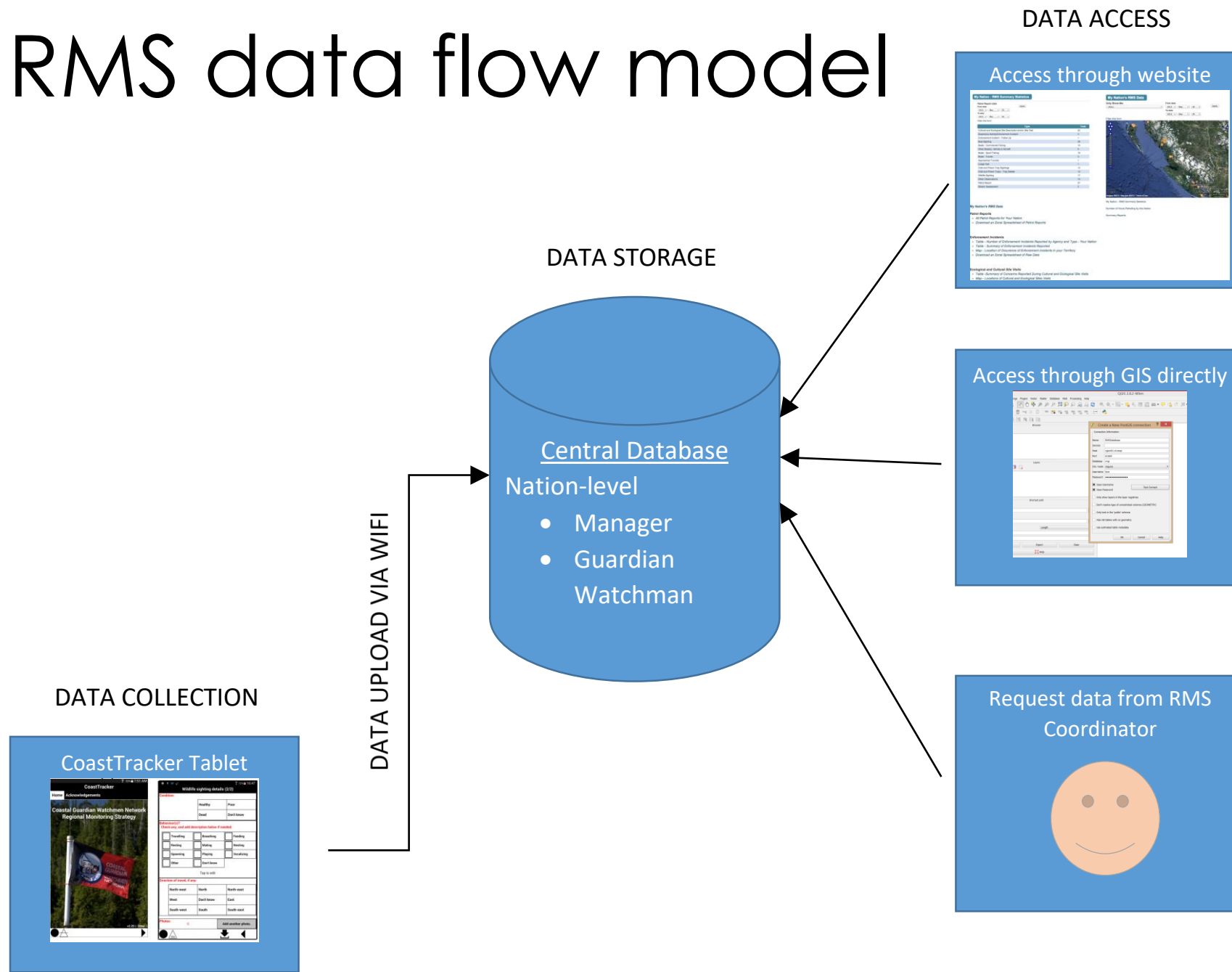


The screenshot shows the 'Wildlife sighting details (2/2)' form. The status bar at the top shows 72% battery and 16:47. The form is divided into several sections:

- Condition:** A table with two columns: 'Healthy' and 'Poor' in the first row, and 'Dead' and 'Don't know' in the second row.
- Behaviour(s)?** A section with the instruction 'Check any, and add description below if needed:'. It contains a grid of checkboxes for various behaviours: Travelling, Breaching, Feeding, Resting, Mating, Nesting, Spawning, Playing, Vocalizing, Other, and Don't know.
- Direction of travel, if any:** A table with three columns: North-west, North, North-east in the first row; West, Don't know, East in the second row; and South-west, South, South-east in the third row.
- Photos:** A section showing '0' photos and a button labeled 'Add another photo.'

At the bottom, there is a navigation bar with a black circle, a triangle with '30s' inside, a downward arrow, and a left arrow.

RMS data flow model



Coastal First Nations currently using the RMS...



Kitasoo/Xai'xais Stewardship History

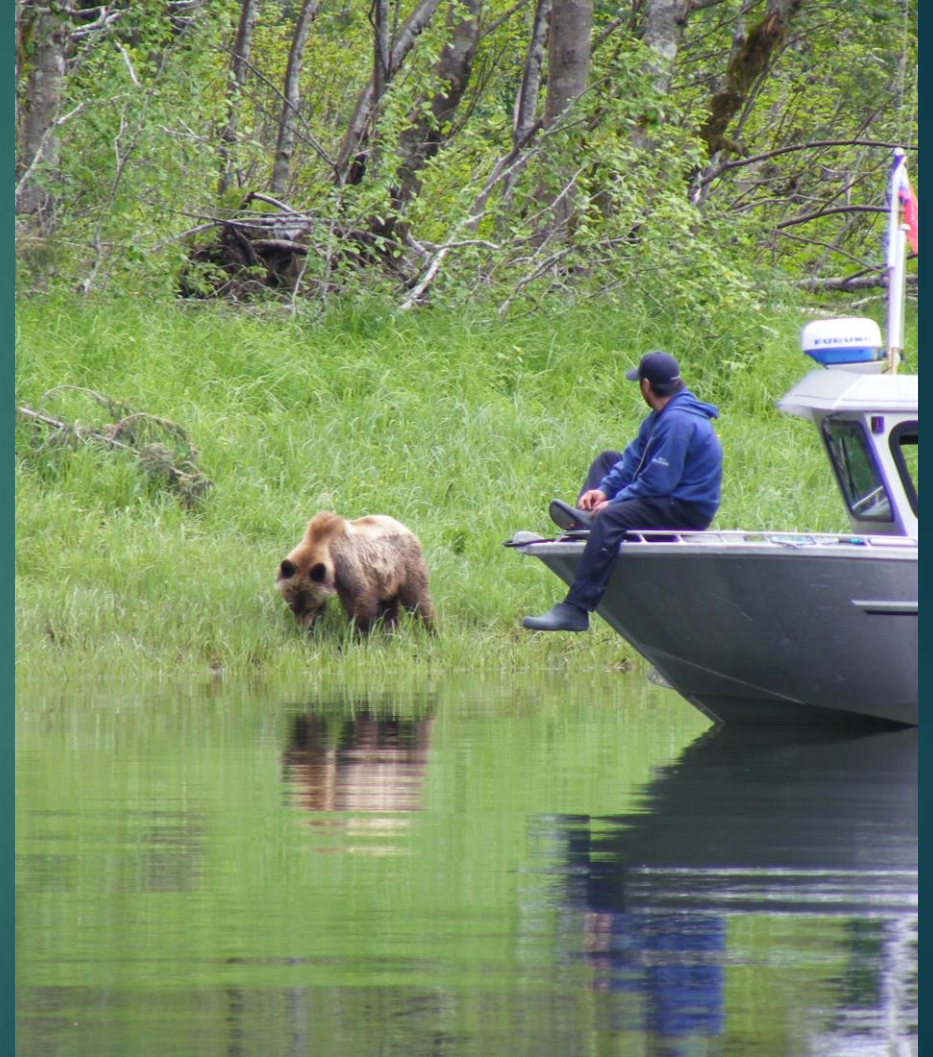
- ▶ Born out of Marine Use Planning process in early 2000's.
- ▶ Priority in land and marine use plans was for First Nations to have a monitoring and enforcement role on the ground.
- ▶ Guardian Watchmen program and Stewardship Office developed to implement the plans in areas (ie Protected Marine Zones)
- ▶ Required mapping tools to match what was happening on the ground to the plans.



KITASOO/XAI'XAIS
First Nation

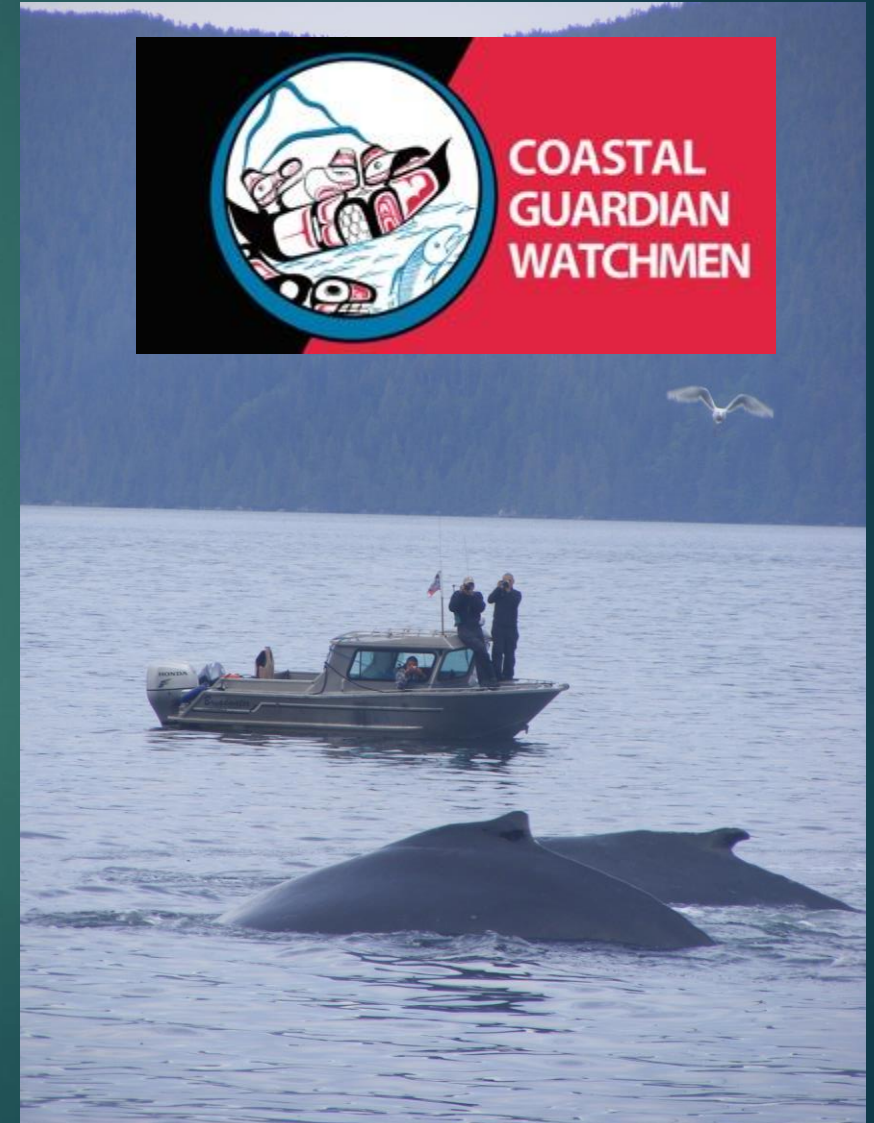
Kitasoo/Xai'xais Integrated Resource Authority

- ▶ Planning: land use, marine and protected areas; data and referrals management
- ▶ Research: bears and salmon
- ▶ Culture: language, stories, Indigenous Laws
- ▶ Youth: SEAS, Outdoor education
- ▶ Coastal Guardian Watchmen
 - ▶ Territory
 - ▶ Research



Coastal Guardian Watchmen

- ▶ Territory Watchmen
 - ▶ Patrol the entire territory – 2 people
 - ▶ Enforce site-specific plans– exclusive use areas
- ▶ Mussel Inlet Watchmen
 - ▶ 2 people living at mussel cabin(Aug- Oct)
 - ▶ Limits operator access, group sizes and the times they can be in area
- ▶ Research Watchmen
 - ▶ Collect data on specific issues

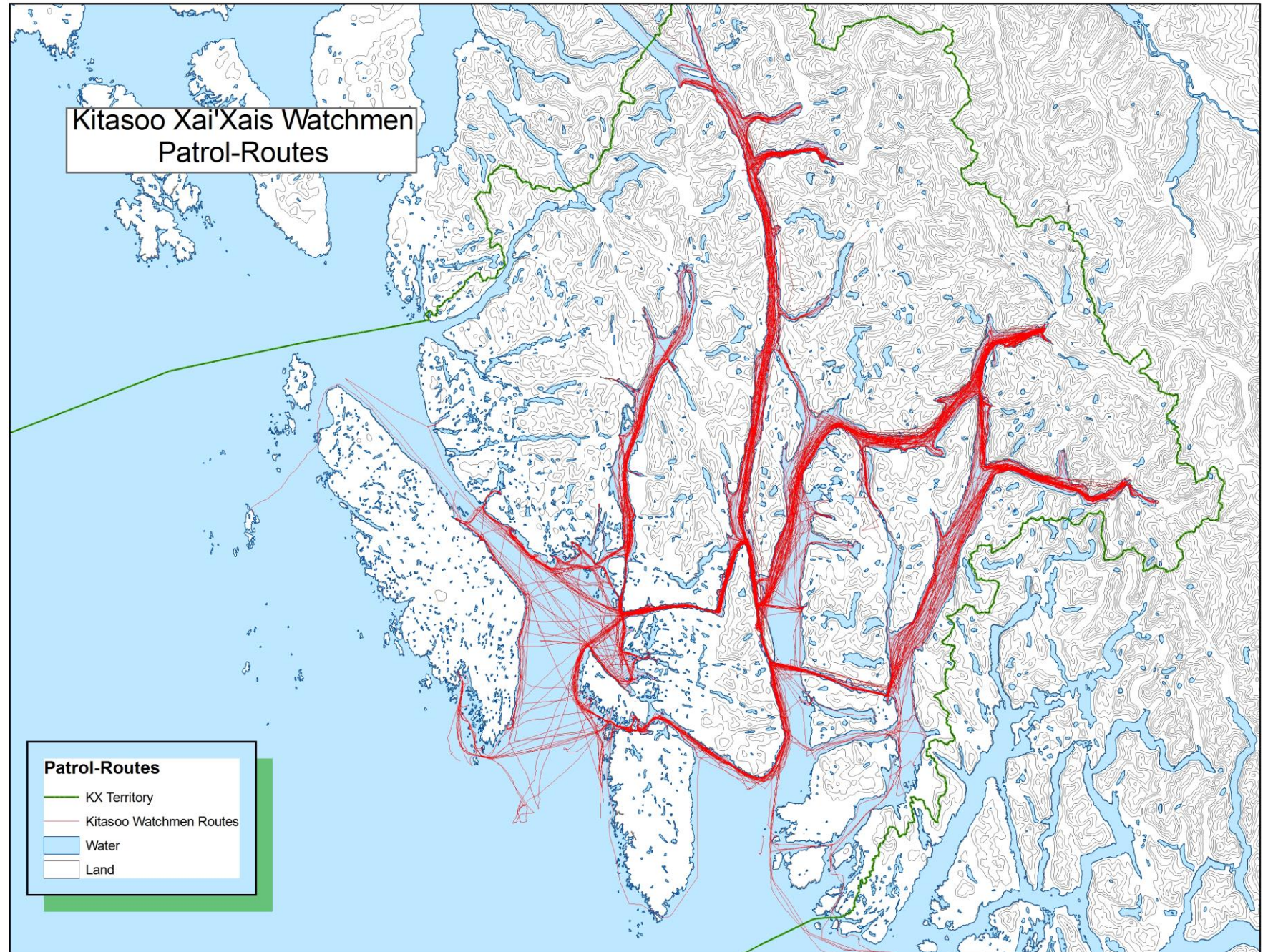


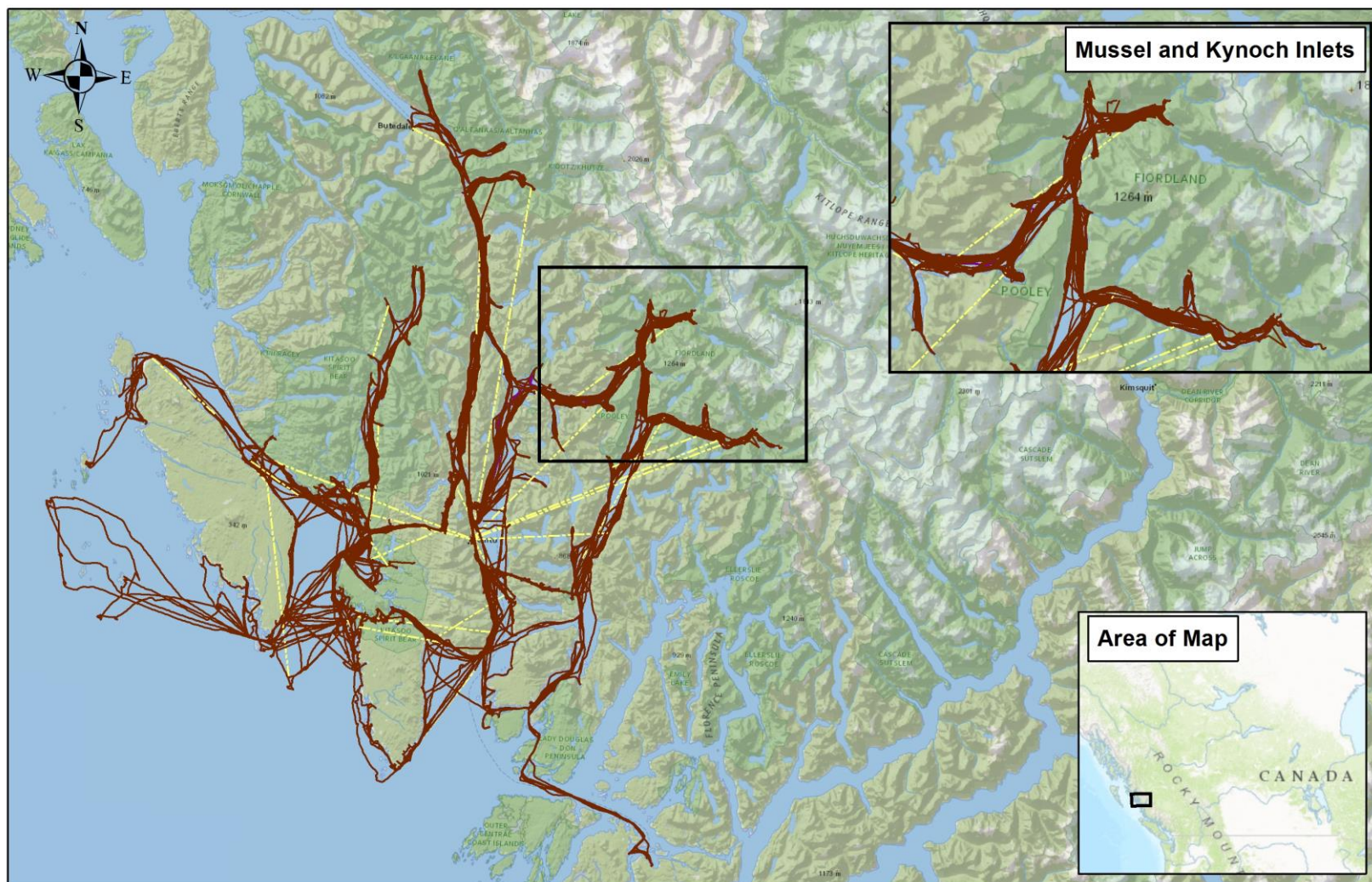
How we use the RMS



- ▶ Monitoring and enforcing marine use plans
- ▶ Support conservation of wildlife species
- ▶ Reports to community, Chief and Council, funders
- ▶ Referral responses to development pressures
- ▶ Informing government to government discussions

BC Parks patrols vs. KX CGW Patrols



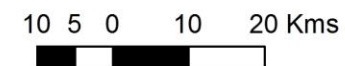


Patrol type	Number of patrols	Distance covered (km)	Time patrolling
Dedicated Patrol Day	103	12685.47	732:24:03
In Transit Monitoring	84	8540.67	623:08:38

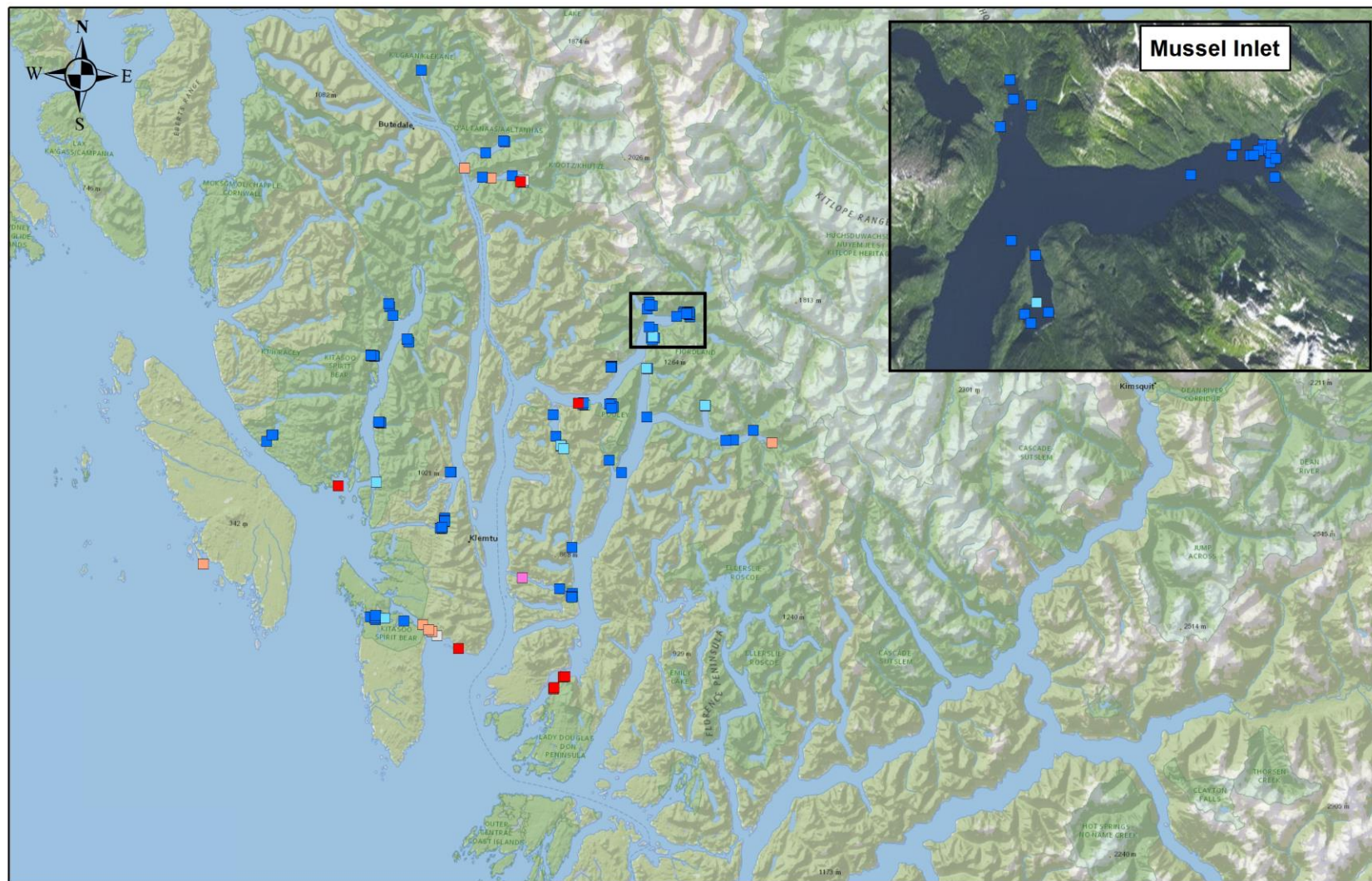
2016 Guardian Watchmen Patrols

GPS Status/Entry Type

- GPS Active
- No GPS
- Fieldcard



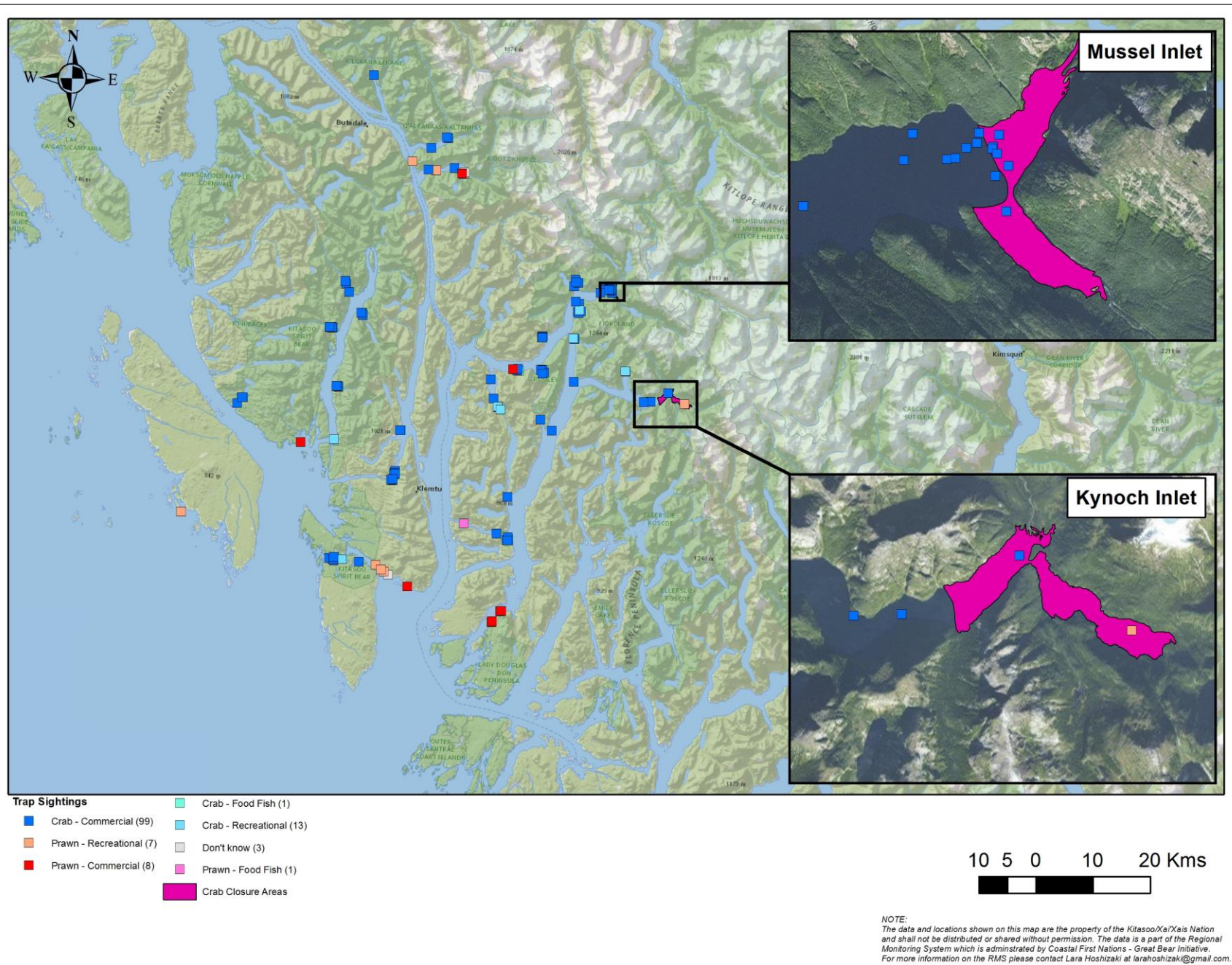
NOTE:
The data and locations shown on this map are the property of the Kitsoo/Xai'Xais Nation and shall not be distributed or shared without permission. The data is a part of the Regional Monitoring System which is administered by Coastal First Nations - Great Bear Initiative. For more information on the RMS please contact Lara Hoshizaki at larahoshizaki@gmail.com.

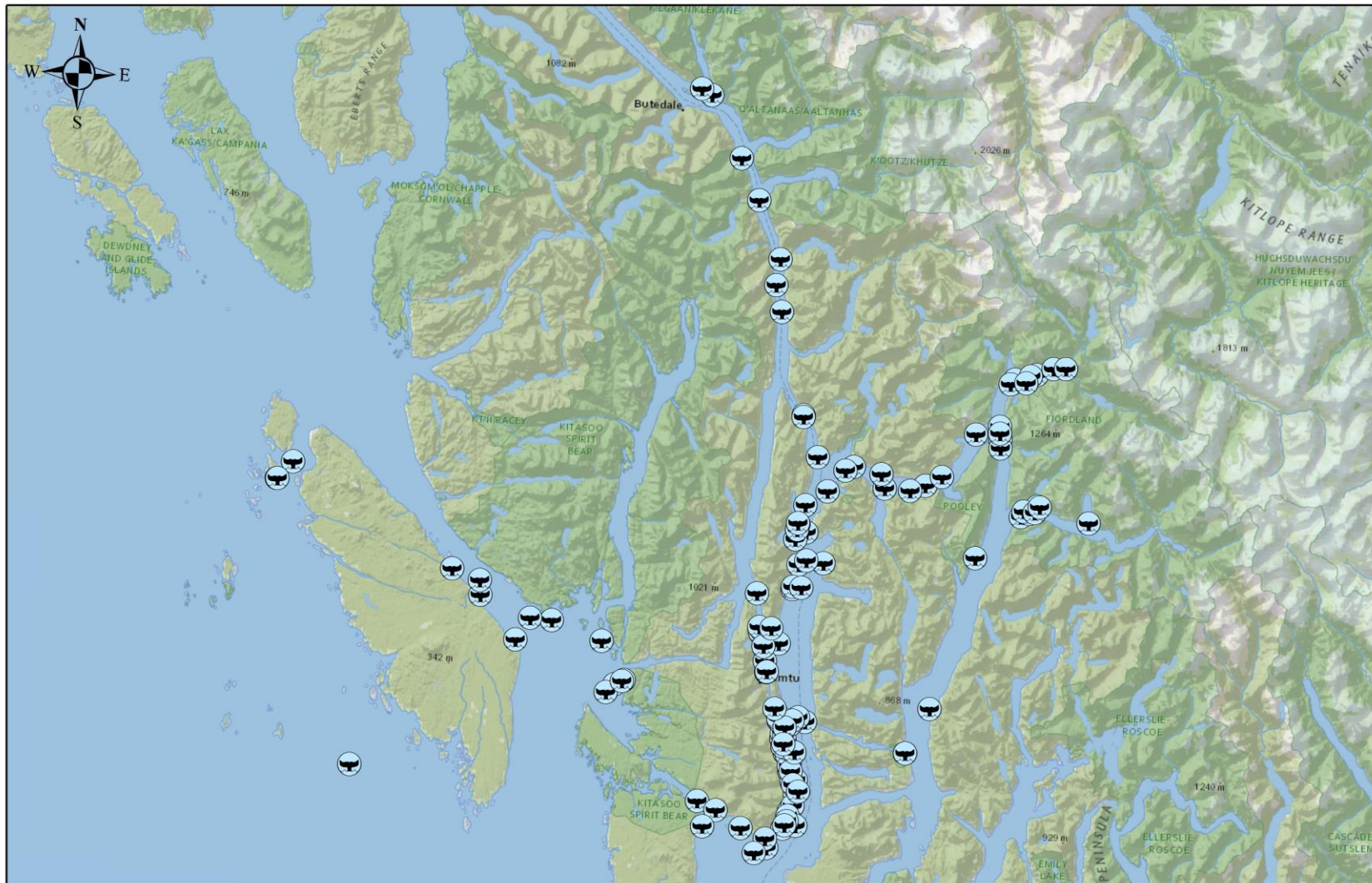


- Trap Sightings**
- Crab - Commercial (99)
 - Prawn - Recreational (7)
 - Prawn - Commercial (8)
 - Crab - Food Fish (1)
 - Crab - Recreational (13)
 - Don't know (3)
 - Prawn - Food Fish (1)

10 5 0 10 20 Kms

NOTE:
 The data and locations shown on this map are the property of the Kootenai River Indian Band and shall not be distributed or shared without permission. The data is a part of the Regional Monitoring System which is administered by Coastal First Nations - Great Bear Initiative. For more information on the RMS please contact Lara Hoshizaki at larahoshizaki@gmail.com.





Humpback Whale Sightings

 Humpback Whale (127)

10 5 0 10 20 Kms



NOTE:
The data and locations shown on this map are the property of the Kitsoo/Xa/Xais Nation and shall not be distributed or shared without permission. The data is a part of the Regional Monitoring System which is administered by Coastal First Nations - Great Bear Initiative. For more information on the RMS please contact Lara Hoshizaki at larahoshizaki@gmail.com.

Thank you! Questions?

Vernon Brown
Kitasoo/Xai'xais Integrated
Resources Authority
Applications.kitasooband@gmail.com

www.klemtu.com



Lara Hoshizaki, Coastal First Nations –
Great Bear Initiative, RMS Coordinator
larahoshizaki@gmail.com
Ph. 778-708-1014

www.coastalguardianwatchmen.ca

